

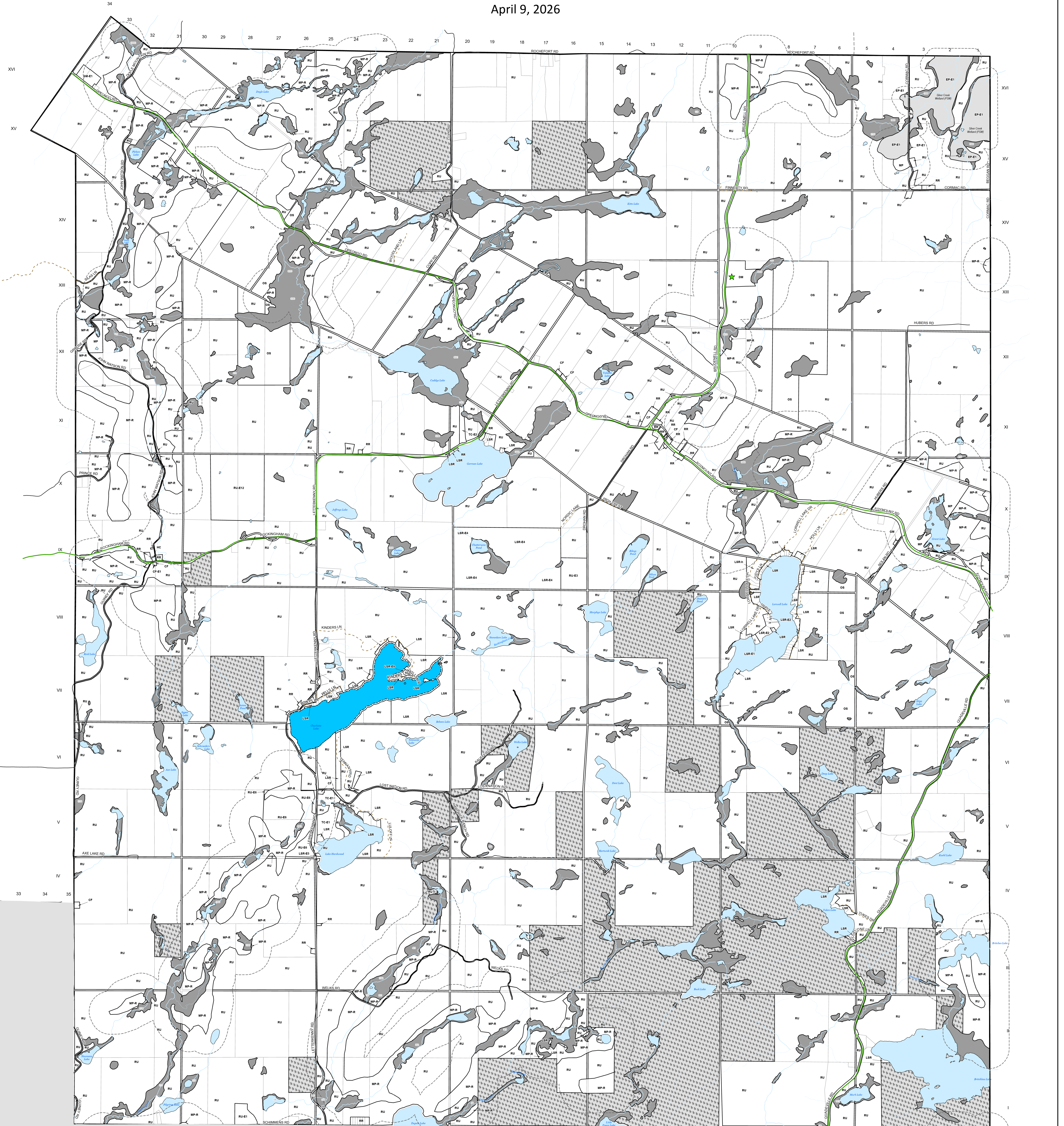
# Township of Brudenell, Lyndoch & Raglan

## Zoning By-Law

### Schedule 'A'

#### Map 1 - Brudenell

DRAFT MAP  
April 9, 2026



- Waste Disposal Active
- Waste Disposal Inactive
- Intermittent River/Stream
- Permanent River/Stream
- Provincial Highway
- County Road
- Municipal Maintained Road
- Municipal Seasonal Road
- Private Road
- Crown Road
- At Capacity Lake
- CF - Community Facility
- DM - Disposal Industrial Reserve
- EP - Environment Protection Area - Exception One (PSW)
- E - Exception Zone
- GM - General Industrial
- HC - Highway Commercial
- LSR - Limited Service Residential
- MP - Mineral Aggregate Pit
- MP-R - Mineral Aggregate Pit Reserve
- MM-R - Mining Industrial Reserve
- OS - Open Space
- RU - Rural
- RR - Rural Residential
- TC - Tourist Commercial
- Water
- Property Parcel
- Separation Distances

Zone	Feature	Required Minimum
DM	Waste Disposal Site	500 metres
EP-E1	Provincially Significant Wetland (PSW)	120 metres
MM-R	Mining Industrial Reserve	1000 metres
MP and MP-R	Sand and Gravel Resource and Licensed Pit	300 metres

Corporation of The  
Township of Brudenell, Lyndoch & Raglan

This is Schedule 'A' to the By-law Number \_\_\_\_\_  
Passed the \_\_\_\_\_ day of \_\_\_\_\_ 20\_\_\_\_\_  
Signatures of Signing Officers

\_\_\_\_\_  
Mayor

\_\_\_\_\_  
CAO/Clerk