

Township of Brudenell, Lyndoch & Raglan

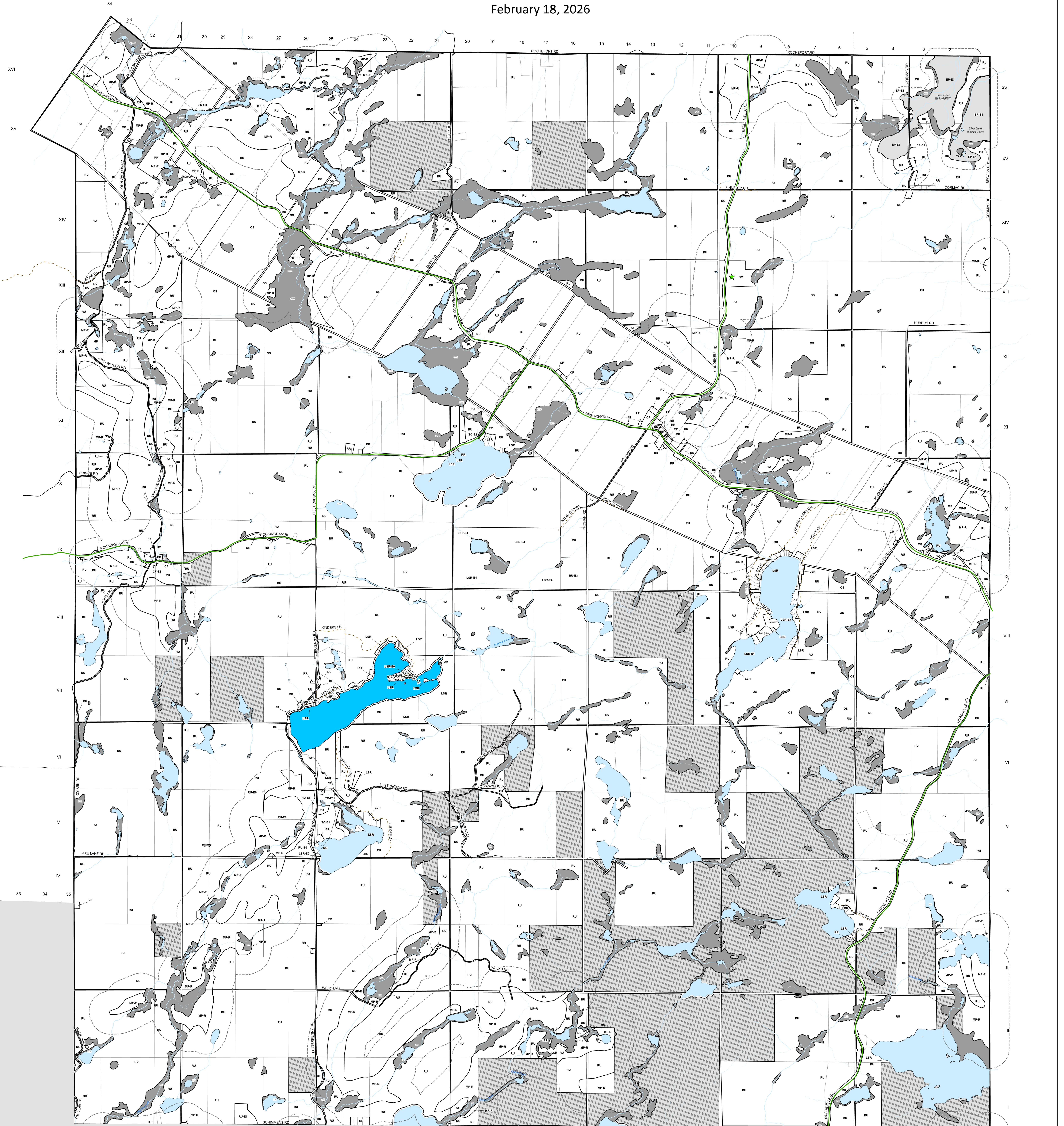
Zoning By-Law

Schedule 'A'

Map 1 - Brudenell

DRAFT MAP

February 18, 2026



- Waste Disposal Active
- Waste Disposal Inactive
- Intermittent River/Stream
- Permanent River/Stream
- Provincial Highway
- County Road
- Municipal Maintained Road
- Municipal Seasonal Road
- Private Road
- Crown Road
- At Capacity Lake
- CF - Community Facility
- Crown Land
- DM - Disposal Industrial Reserve
- EP - Environment Protection Area - Exception One (PSW)
- E - Exception Zone
- GM - General Industrial
- HC - Highway Commercial
- LSR - Limited Service Residential
- MP - Mineral Aggregate Pit
- MP-R - Mineral Aggregate Pit Reserve
- MM-R - Mining Industrial Reserve
- OS - Open Space
- RU - Rural
- RR - Rural Residential
- TC - Tourist Commercial
- Water
- Property Parcel
- Separation Distances

Zone	Feature	Required Minimum
DM	Waste Disposal Site	500 metres
EP-E1	Provincially Significant Wetland (PSW)	120 metres
MM-R	Mining Industrial Reserve	1000 metres
MP and MP-R	Sand and Gravel Resource and Licensed Pit	300 metres

**Corporation of The
Township of Brudenell, Lyndoch & Raglan**

This is Schedule 'A' to the By-law Number _____
Passed the _____ day of _____ 20_____
Signatures of Signing Officers

Mayor

CAO/Clerk